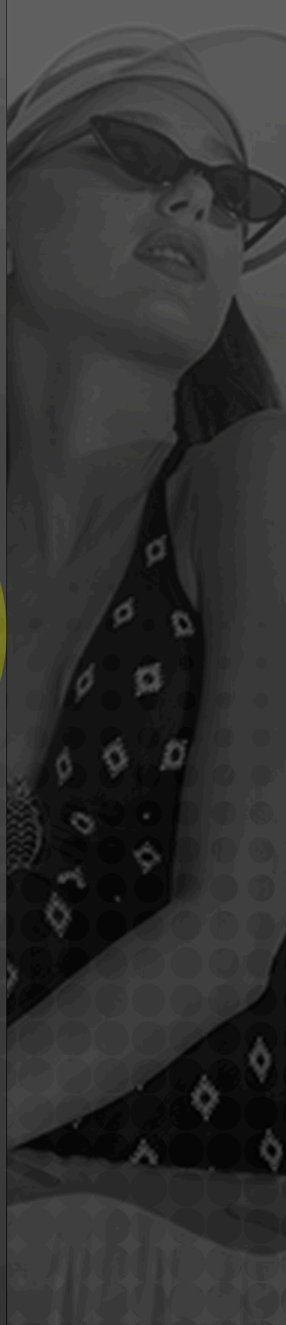




L I V I N G









LIVING

THE ART OF LIVING



LOCATION

DOWNTOWN PUNTA CANA



Provincia La Altagracia, República Dominicana.

Altagracia Province, Dominican Republic.

This vibrant urban area covers an extensive area of 475.3 km² and is home to a thriving community of 43,982 residents.

Steps away from COCOBONGO, HARD ROCK CAFE, DOWNTOWN MALL, DOLPHIN DISCOVERY AND MUCH MORE...



Just 10 minutes away from the globally acclaimed beaches, such as Playa Bavaro, El Cortecito, Cabeza de Toro, among others.

**WHERE THE ART OF URBAN
LIFE AND THE BEAUTY OF
NATURE COEXIST
HARMONIOUSLY...**





CHARACTER

FEATURES

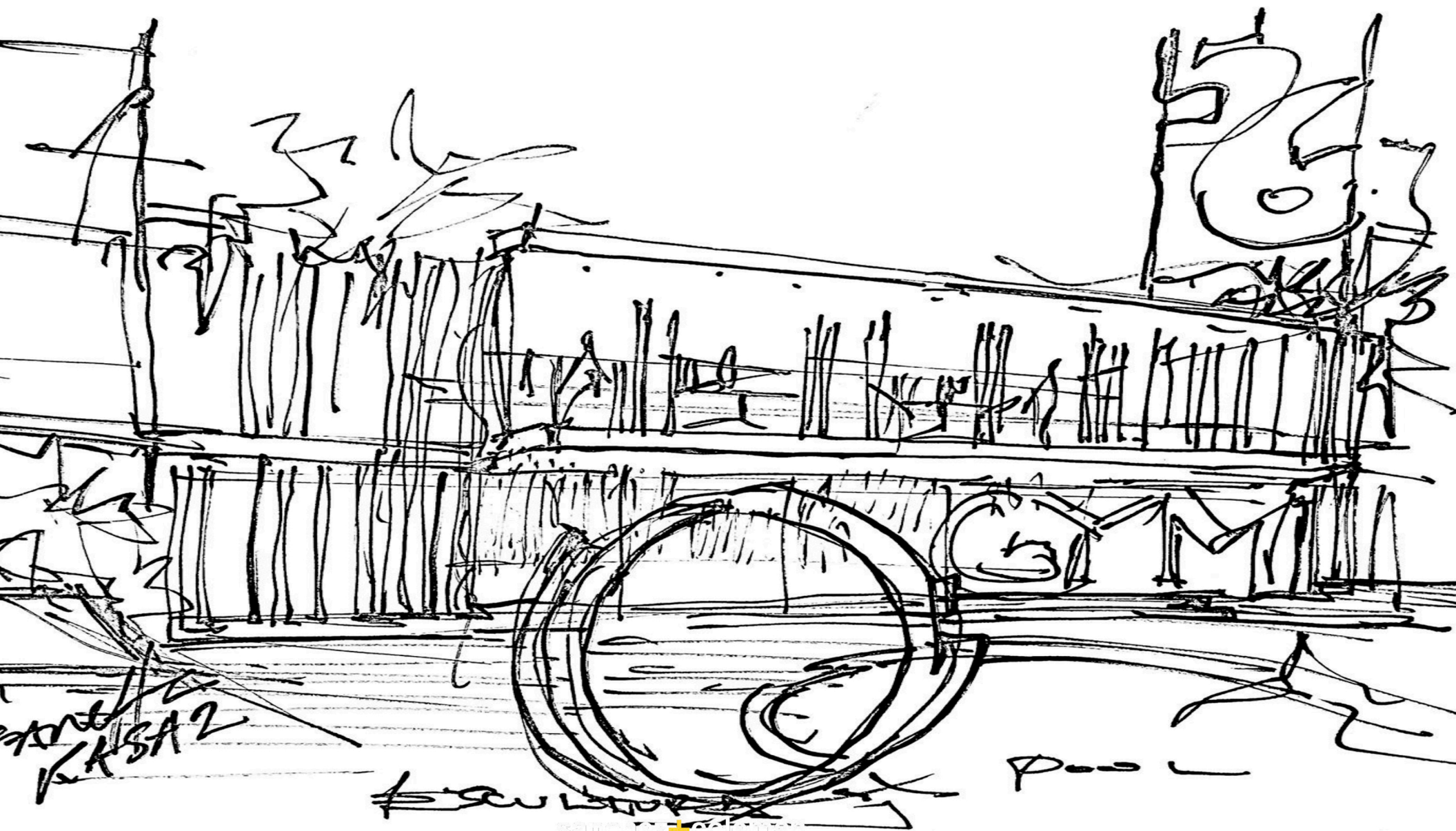
With 109 meticulously designed apartment units, our residence aims to redefine modern living. These units are intelligently distributed across four blocks, each spanning five levels, offering a well-organized and dynamic living environment.





Each block has its own welcoming lobby and independent vertical access, promising a seamless transition to its urban sanctuary, ensuring privacy and comfort for all residents.





Hand-drawn
KASA 2

Hand-drawn sketch

pool

AMENITIES

AMENITIES



Luxury elevators



Security 24 hours
a day, 7 days a week



Swimming
pool



Fitness
center



BBQ area



Individual lobby
for each module



Showers
in the pool area



Private
parking



Private
terraces



Recreational
areas



Basic
furnishings



Linen
and towels



Home automation
(blinds, lights,
sounds)



Intelligent
locks



KAFE







FACILITIES



BANKS



SHOPPING MALLS



HOTELS



NIGHTLIFE
ENTERTAINMENT



HEALTH
CENTERS



GYMNASIUMS



RESTAURANTS



AQUATIC
PARKS



DOLPHINARIUMS



SUPERMARKETS



TYPOLOGIES

A We have a variety of spacious open concept typologies including suite style apartments and 1, 2 bedroom plus dem apartments.

The living, dining and kitchen areas flow seamlessly together, creating a space conducive to entertaining and relaxation.

You'll also find well-appointed bedrooms and bathrooms, and some units feature private balconies and even a maid's room, enhancing the comfort and flexibility of your living space.



TYPE A

STUDIO TYPE

↔
37.89 M2
1 ROOM
BATHROOM
KITCHEN
LIVING ROOM
CLOSET



TYPE B

1 ROOM

↔
51 M2
1 ROOM
BATHROOM
KITCHEN
LIVING ROOM
CLOSET





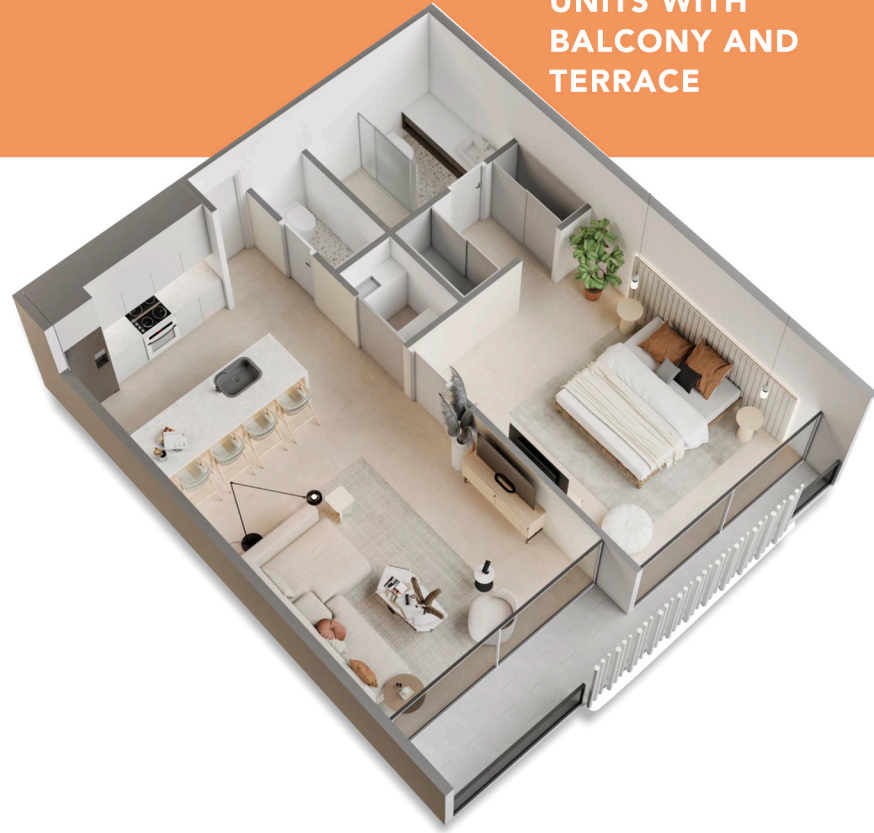
TYPE C

1 ROOM

↔
64.84 M2 TO 79.67 M2

1 ROOM
LIVING AREA
2 BATHROOM
KITCHEN
LIVING ROOM
CLOSET

**UNITS WITH
BALCONY AND
TERRACE**



TYPE D

2 ROOMS

↔
82 M2 TO 108.93 M2

2 ROOMS
CLOSET
2 BATHROOMS
KITCHEN
LIVING ROOM
TERRACE

**UNITS WITH
BALCONY AND
TERRACE**





TYPE E

3 ROOMS



127.14 M2 TO 129.3 M2

3 ROOMS

CLOSET

LIVING AREA

2 BATHROOMS

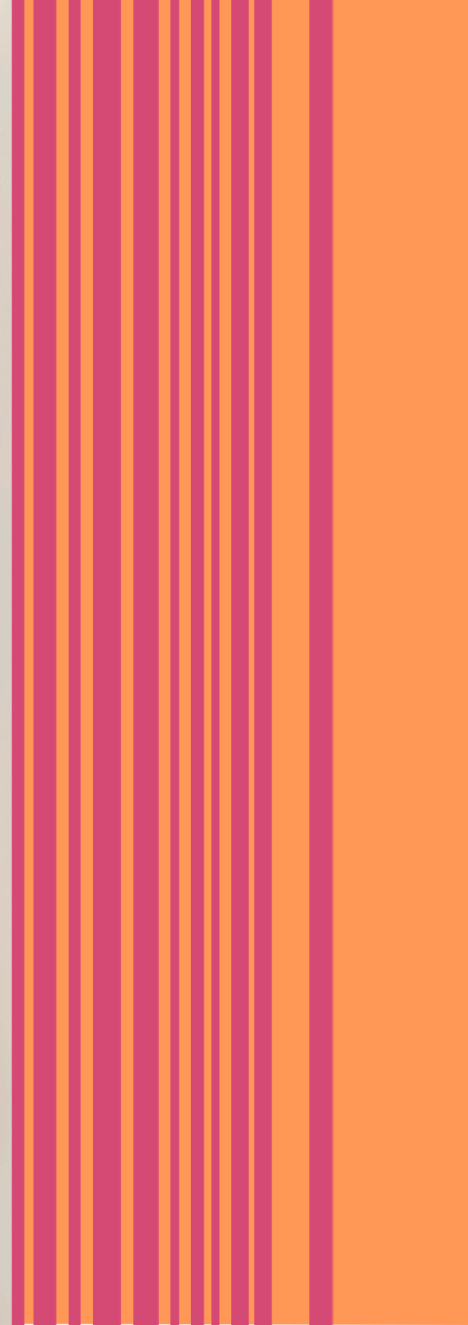
KITCHEN

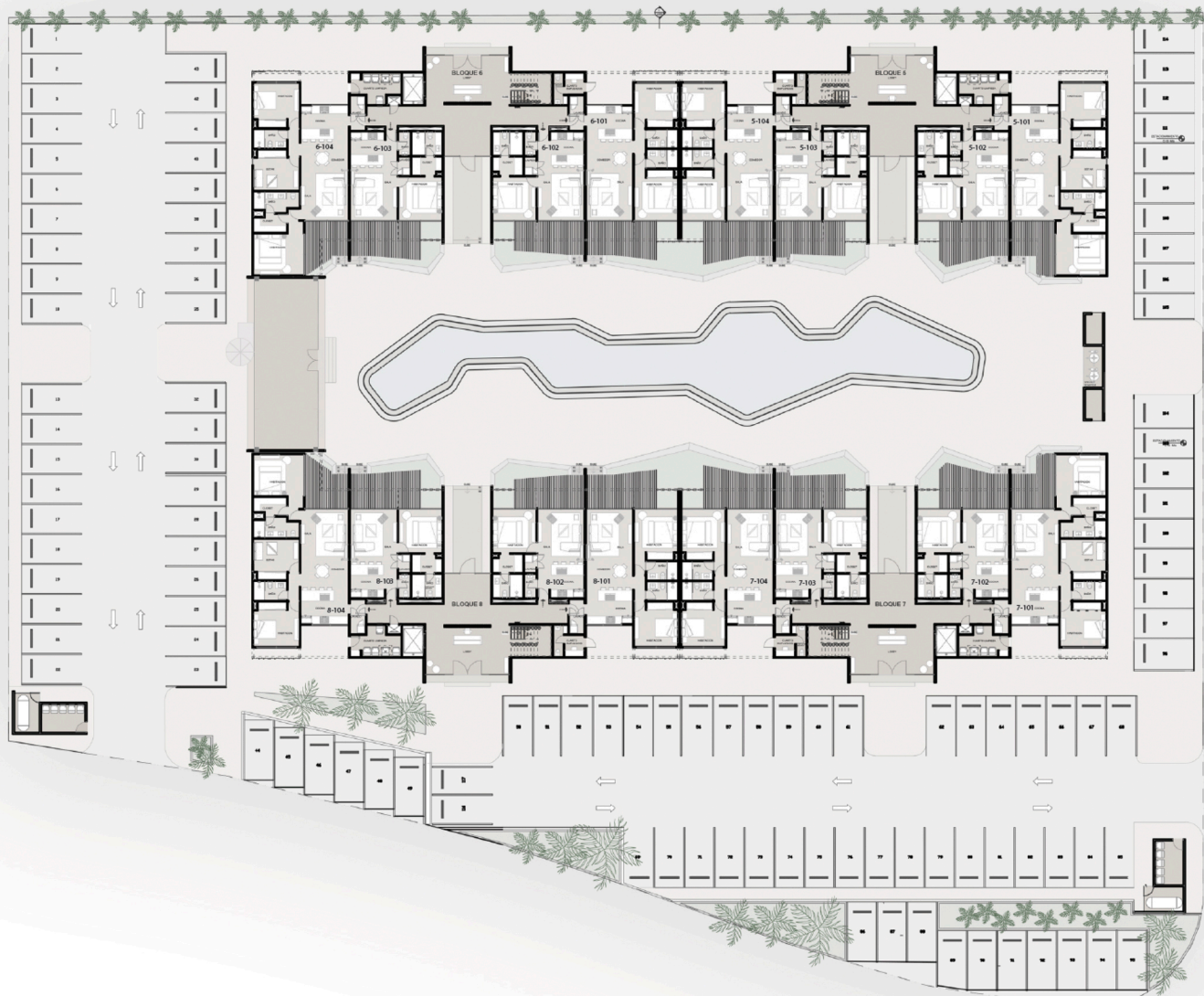
LIVING ROOM

UNITS WITH

BALCONY AND TERRACE

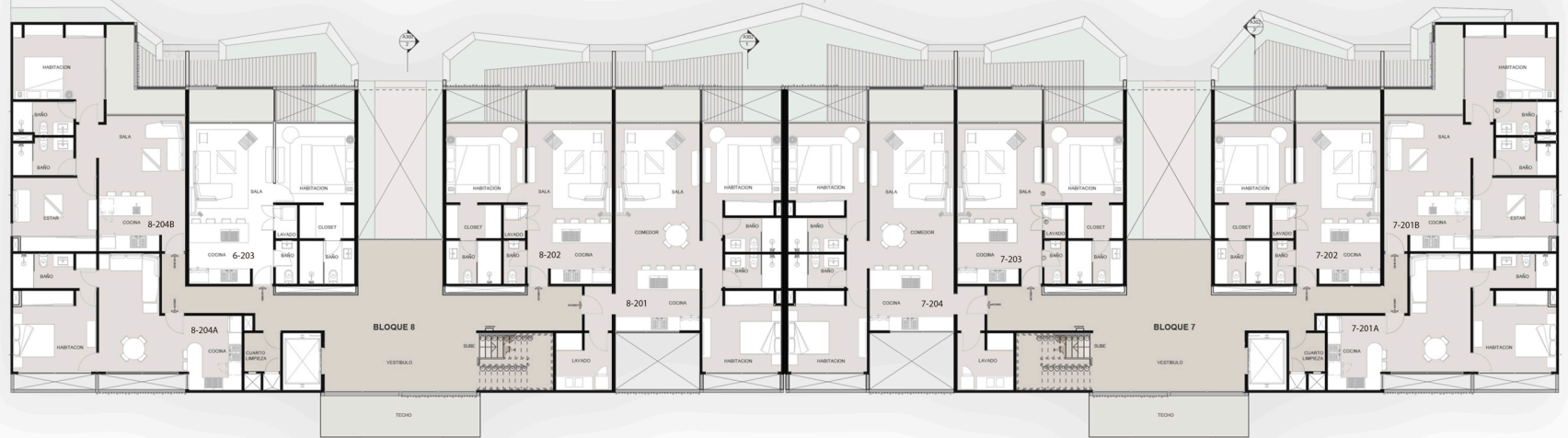








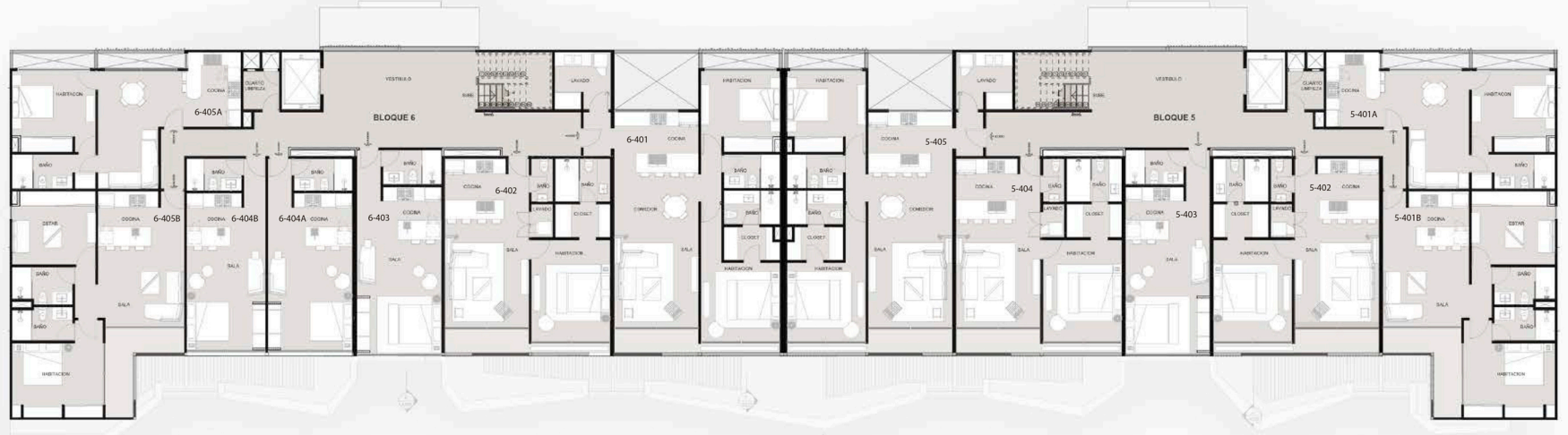
02 PLANTA ARQUITECTONICA 2DO NIVEL
A301 ESC. 1:200





03 PLANTA ARQUITECTONICA 3ER NIVEL
A301 ESC 1:200





04 PLANTA ARQUITECTONICA 4TO NIVEL
ANEX. ENC. 1/200



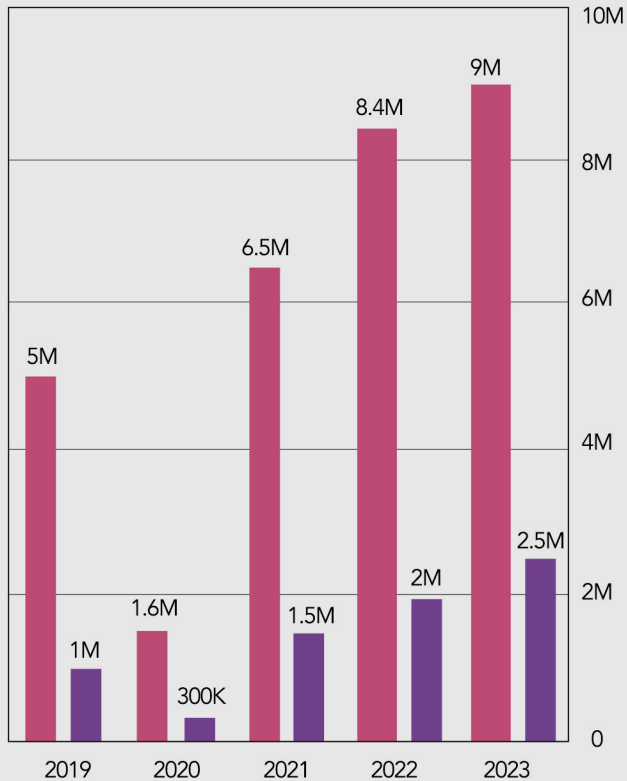


05 PLANTA ARQUITECTONICA 5TO NIVEL
A501 ESC: 1:200



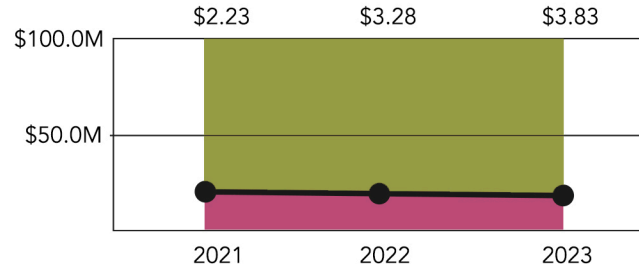
DOMINICAN REPUBLIC

- Annual tourist income
- Number of tourists who invest

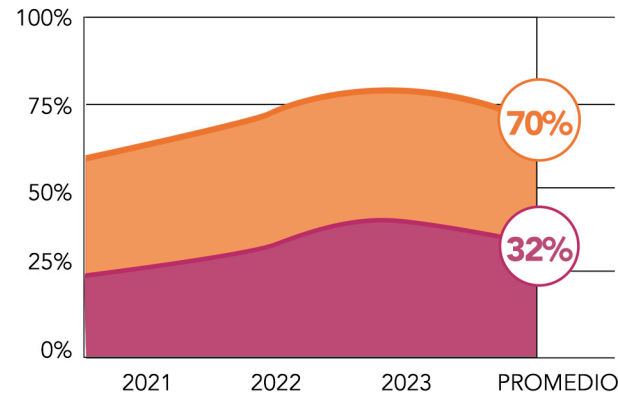


FOREIGN INVESTMENT

- Foreign capital invested
- Direct tourism investment



PUNTA CANA - BÁVARO



70%

OF ANNUAL
TOURIST ARRIVALS
TO THE COUNTRY
COME THROUGH
PUNTA CANA.

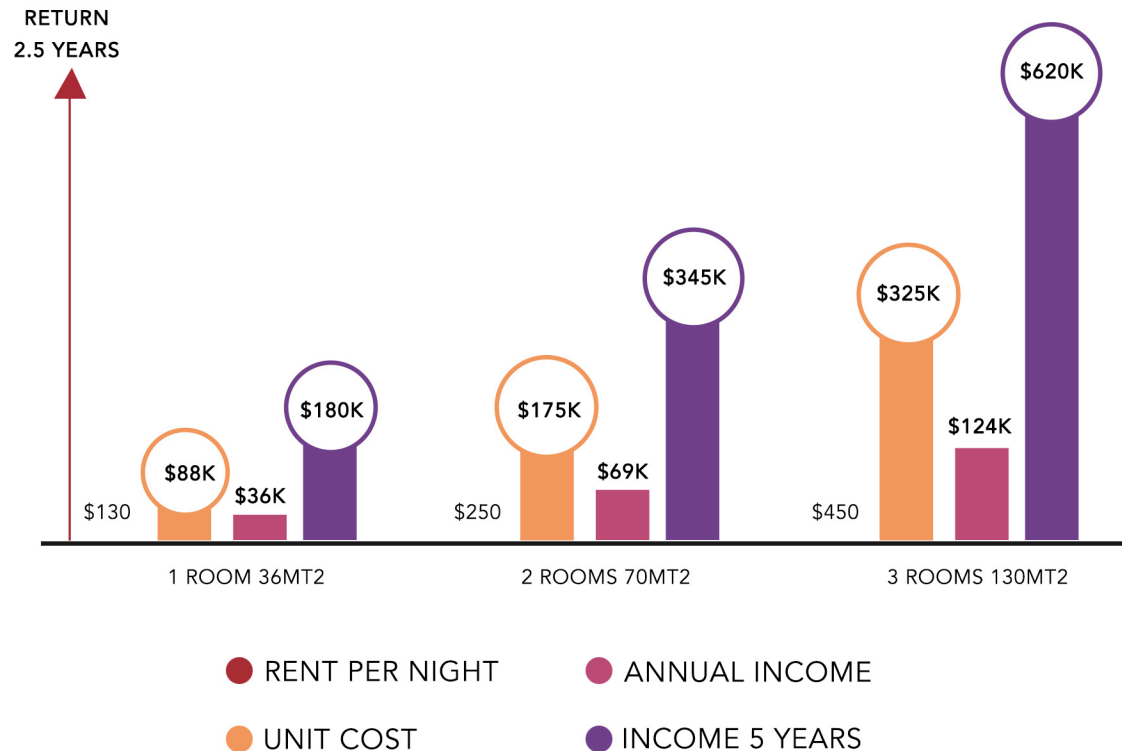
32%

INVESTING
DIRECTLY IN REAL
ESTATE PROJECTS

INVESTS 100% ROI INSURANCE

IN 2 AND A HALF YEARS

ANNUAL
OCCUPANCY OF
PUNTA CANA
75.6%





L I V I N G

