



# Atika

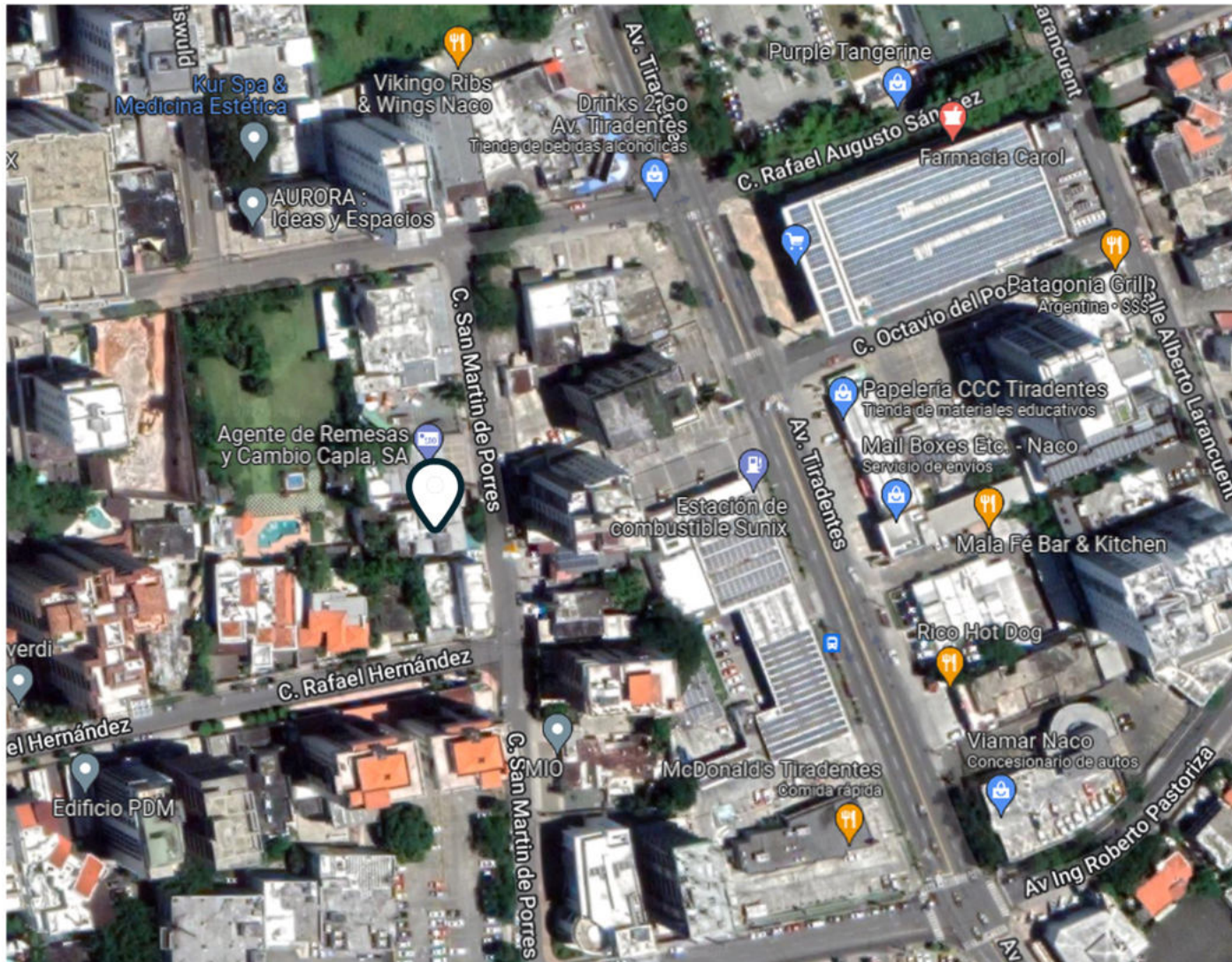
Santo Domingo - Dominican Republic



Located in the central polygon of **SANTO DOMINGO**,  
in the privileged sector of **ENSACHE NACO**.



# MAP OF LOCATION



Calle San Martín de Porres, Ensanche Naco, Paralela a Tiradentes







ATIKA has 55 UNITS  
with 1, 2 and 3 ROOMS, distributed  
in 12 LEVELS, once intended for  
housing and one to the social areas.



# AMENIDADES



Swimming pool



Sauna



Gym



Co-Working



Playground



Social area/BBQ



Lounge



Pet Friendly



Power plant



Subway parking



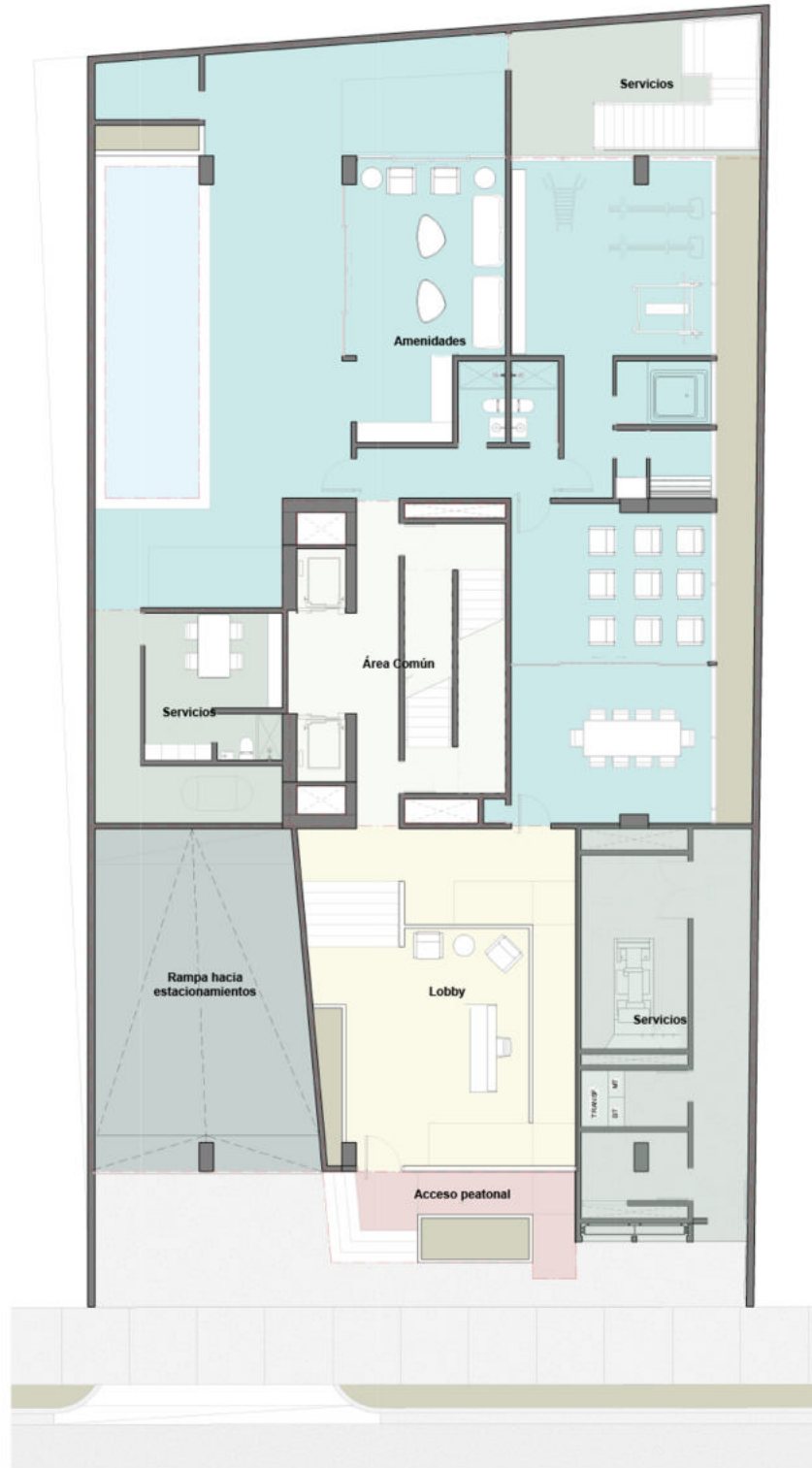








# TYOLOGY OF THE LOW LEVEL LEVEL 1



## CONSTRUCTION AREA LEGEND

### LEVEL 1

- PEDESTRIAN ACCESS 18.27M<sup>2</sup>
- AMENITIES 273.15 M<sup>2</sup>
- LOBBY 72.77M<sup>2</sup>
- RAMP TO PARKING LOTS 59.M<sup>2</sup>
- SERVICES 118.20 M<sup>2</sup>
- COMMON AREA 50.99 M<sup>2</sup>

**TOTAL 592.65 M<sup>2</sup>**





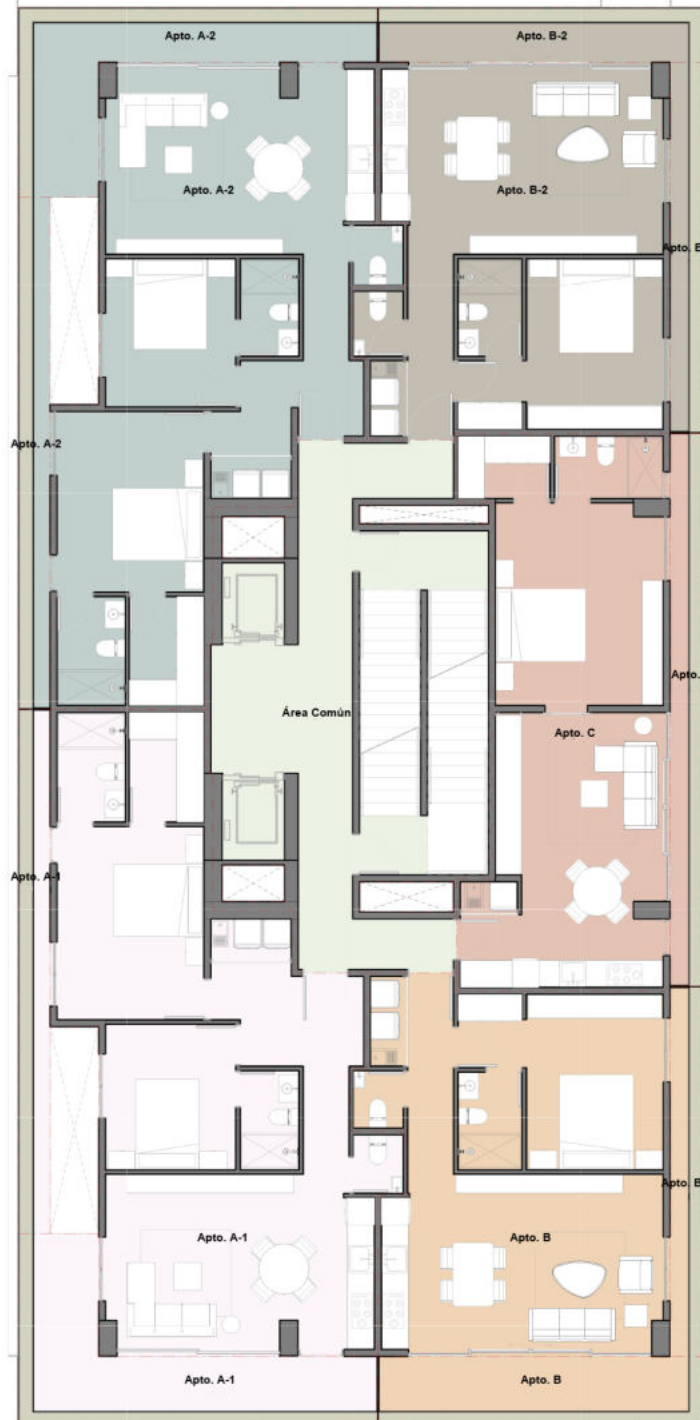











# TIPOLOGY OF APARTMENTS

LEVEL 2DO - 5TO - 8VO - 11VO



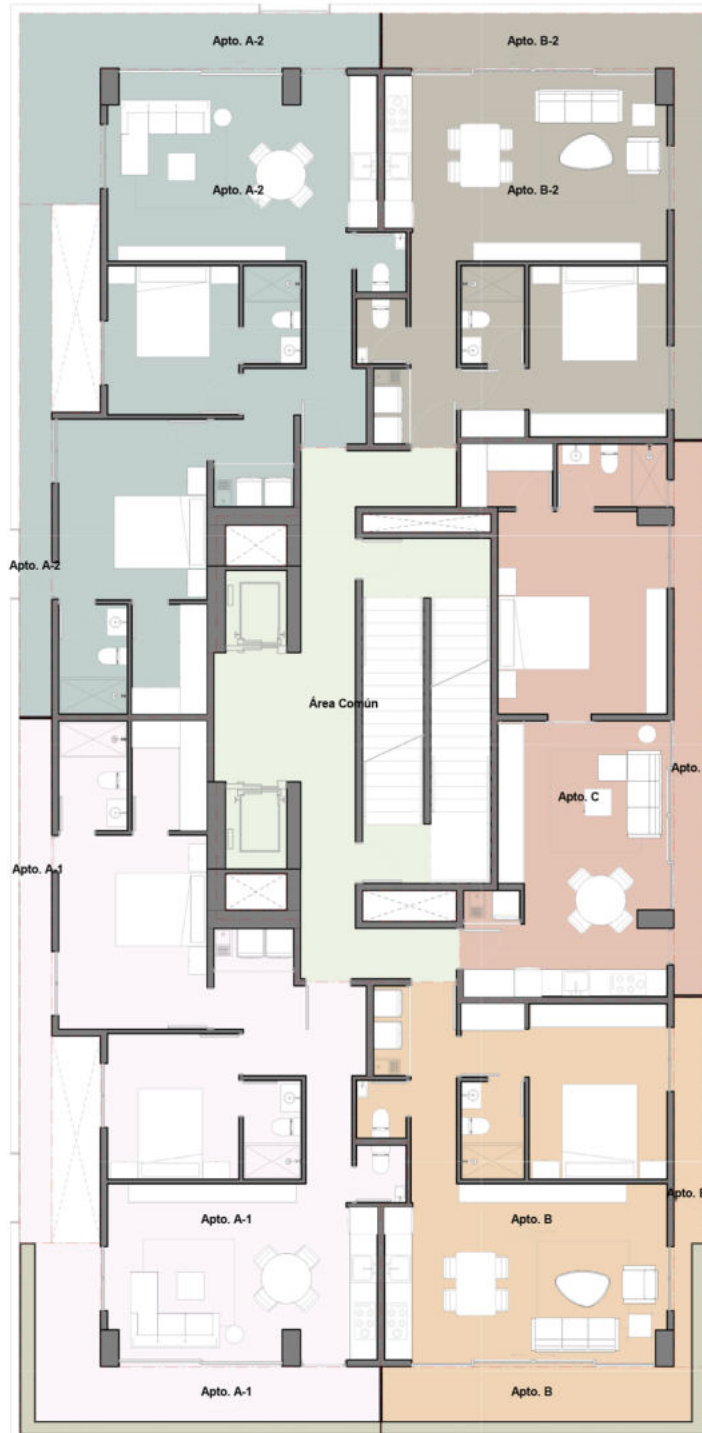
## LEYENDA

NIVEL 2DO - 5TO - 8VO - 11 VO

-  APTO. A-1 99.83 M2
-  APTO. A-2 97.61 M2
-  APTO. B-1 68.54 M2
-  APTO. B-2 66.86 M2
-  APTO. C 55.10 M2

# TYPOLOGY OF APARTMENTS

## NEVEL 3RO - 6TO - 9NO



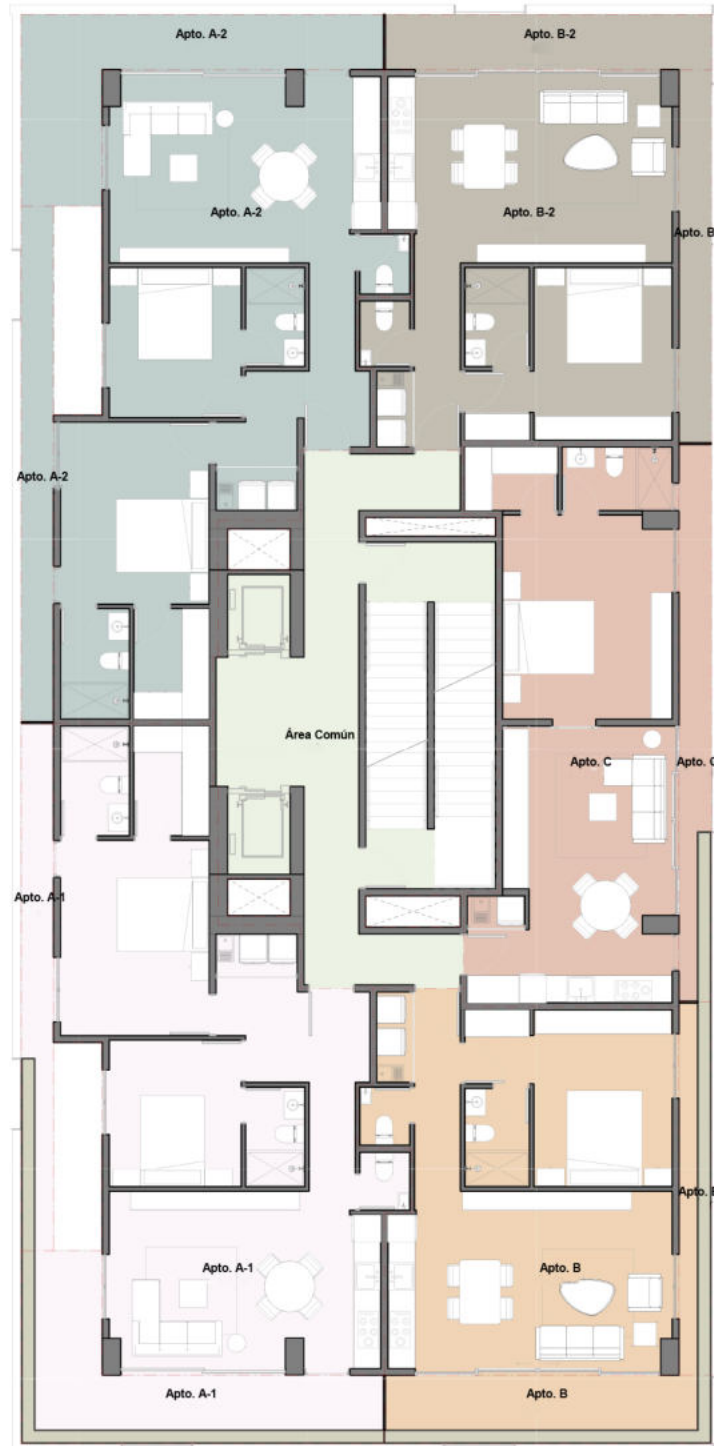
### LEYENDA

#### NIVEL 3RO - 6TO - 9NO

- APTO. A-1 95.89 M2
- APTO. A-2 89.79 M2
- APTO. B-1 66.75 M2
- APTO. B-2 61.52 M2
- APTO. C 51.18 M2

# TYPOLOGY OF APARTMENTS

## NIVEL 4TO - 7MO - 10MO

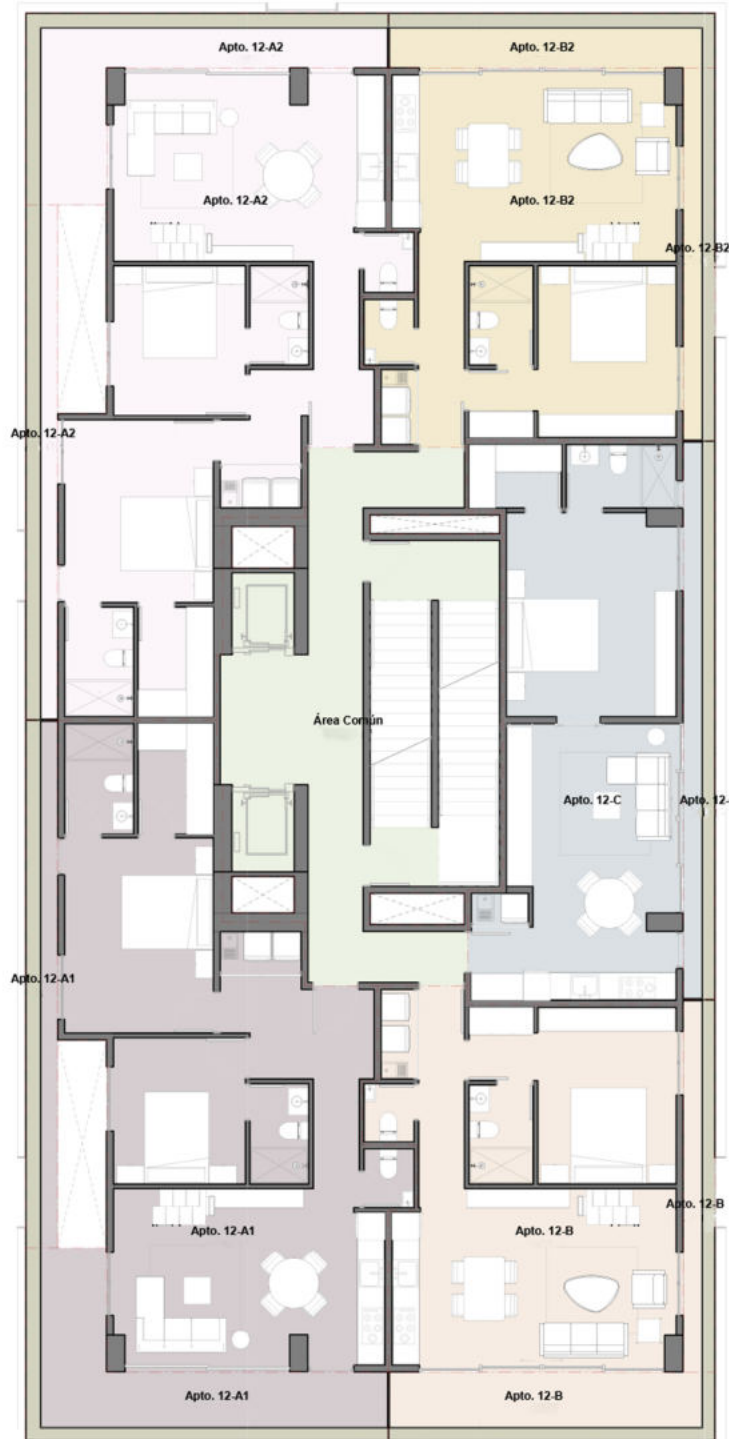


### LEYENDA

#### NIVEL 4TO - 7MO - 10MO

- APTO. A-1 96.99 M2
- APTO. A-2 89.79 M2
- APTO. B-1 68.27 M2
- APTO. B-2 61.52 M2
- APTO. C 52.31 M2

# TIPOLOGY OF APARTMENTS NIVEL 12

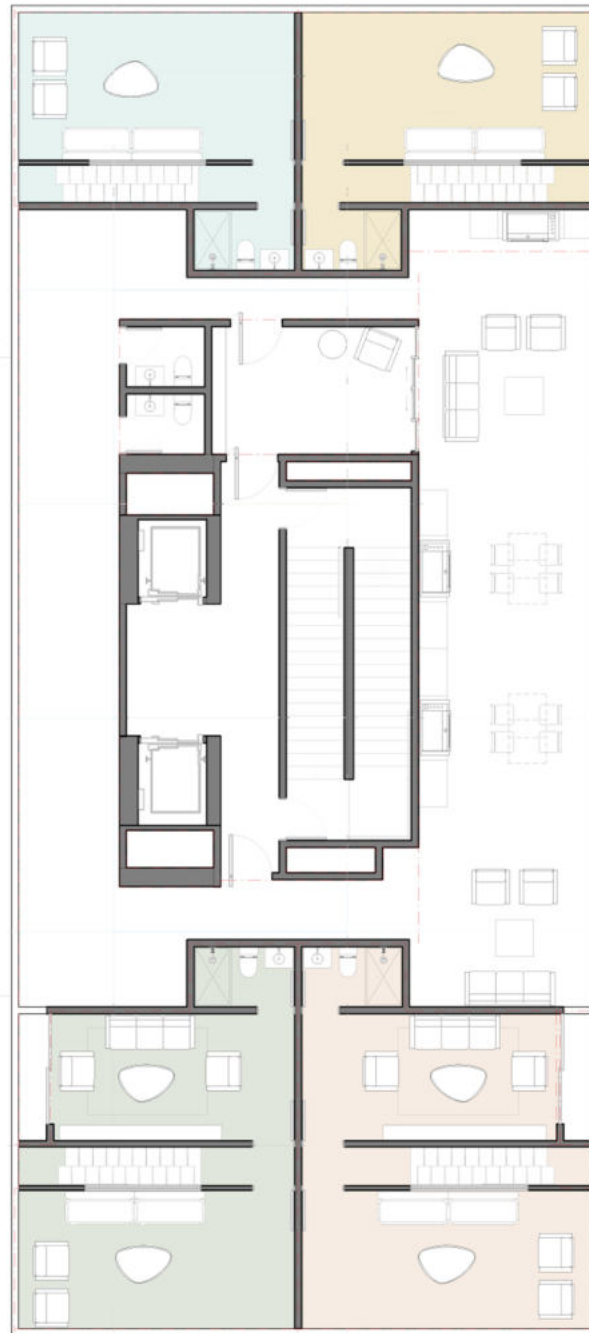


## LEYENDA

### NIVEL 12

- APTO. 12-A1 142.10 M2
- APTO. 12-A2 126.06 M2
- APTO. 12-B1 112.75 M2
- APTO. 12-B2 96.18 M2
- APTO. 12-C 55.10 M2

# TPOLOGY OF APARTMENTS NEVEL AZOTEA

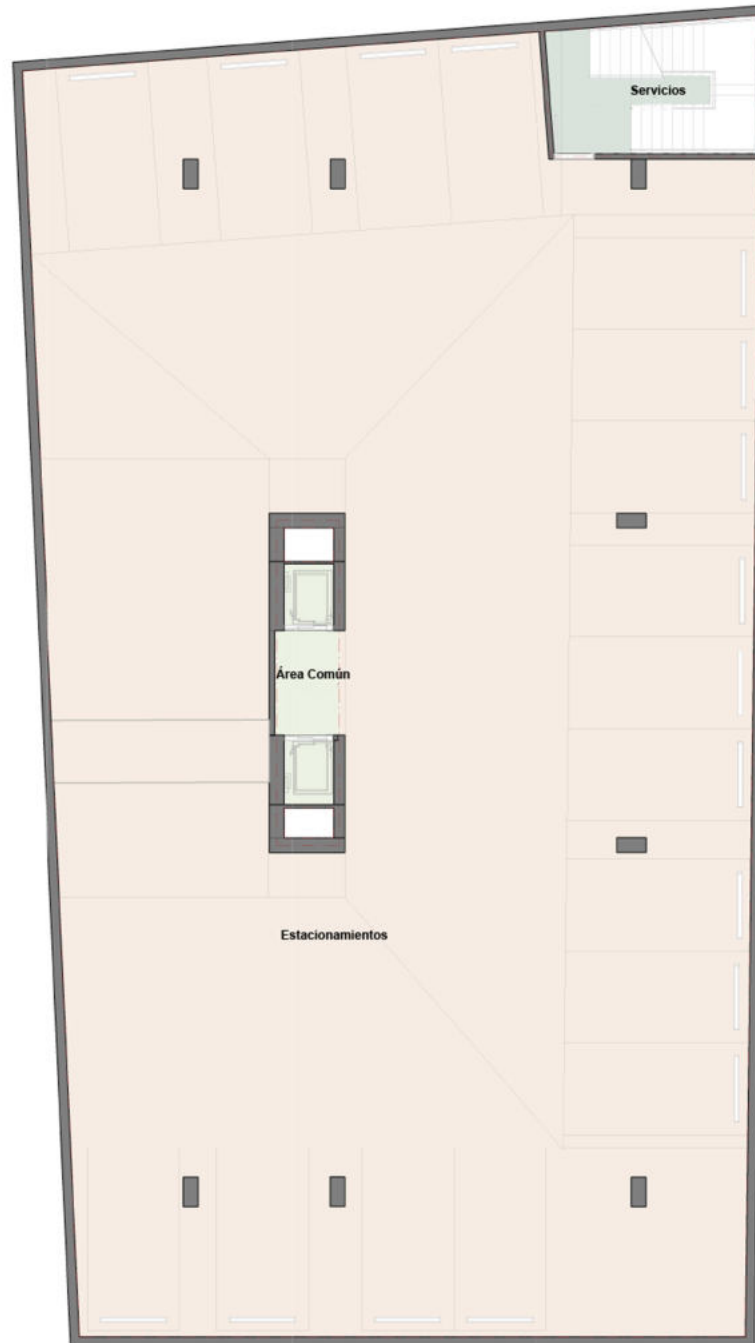


## LEYENDA

### NIVEL AZOTEA

- APTO. 12-A2 28.43 M2
- APTO. 12-B1 44.24 M2
- APTO. 12-B2 29.32 M2
- APTO. 12-A1 42.29 M2

# TYPOLOGY OF BASEMENTS NEVEL 1 - 2 - 3 Y 4



## LEYENDA DE ÁREA CONSTRUCTIVA NIVEL SÓTANO 1 - 2 - 3 - 4

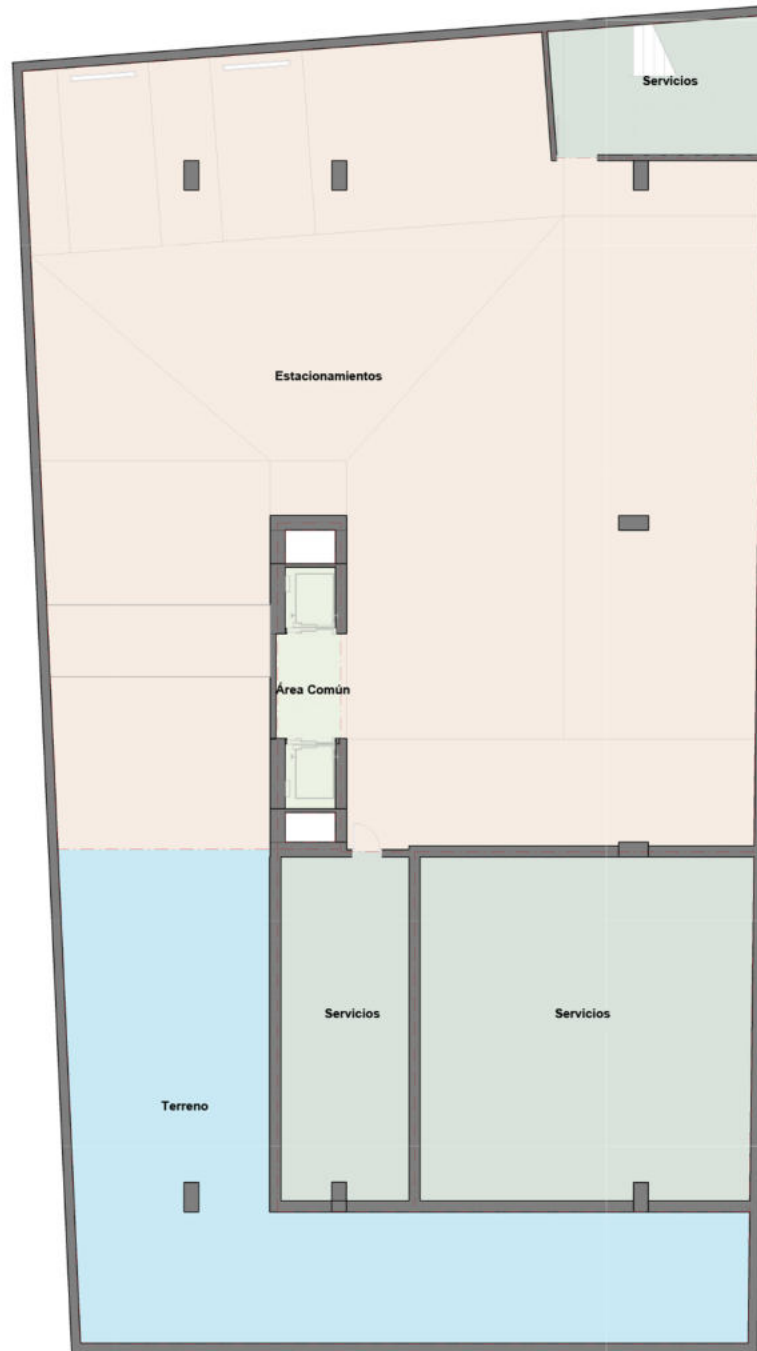
ESTACIONAMIENTOS 634.43 M2

SERVICIOS 21.08 M2

ÁREA COMÚN 12.79 M2

**TOTAL 668.29 M2**

# TYPOLOGY OF BASEMENTS NIVEL 5



## LEYENDA DE ÁREA CONSTRUCTIVA NIVEL SÓTANO 5

ESTACIONAMIENTO 388.68 M<sup>2</sup>

SERVICIOS 146.15 M<sup>2</sup>

TERRENO 120.67 M<sup>2</sup>

ÁREA COMÚN 12.79 M<sup>2</sup>

**TOTAL 668.29 M<sup>2</sup>**



Atika