



Aria

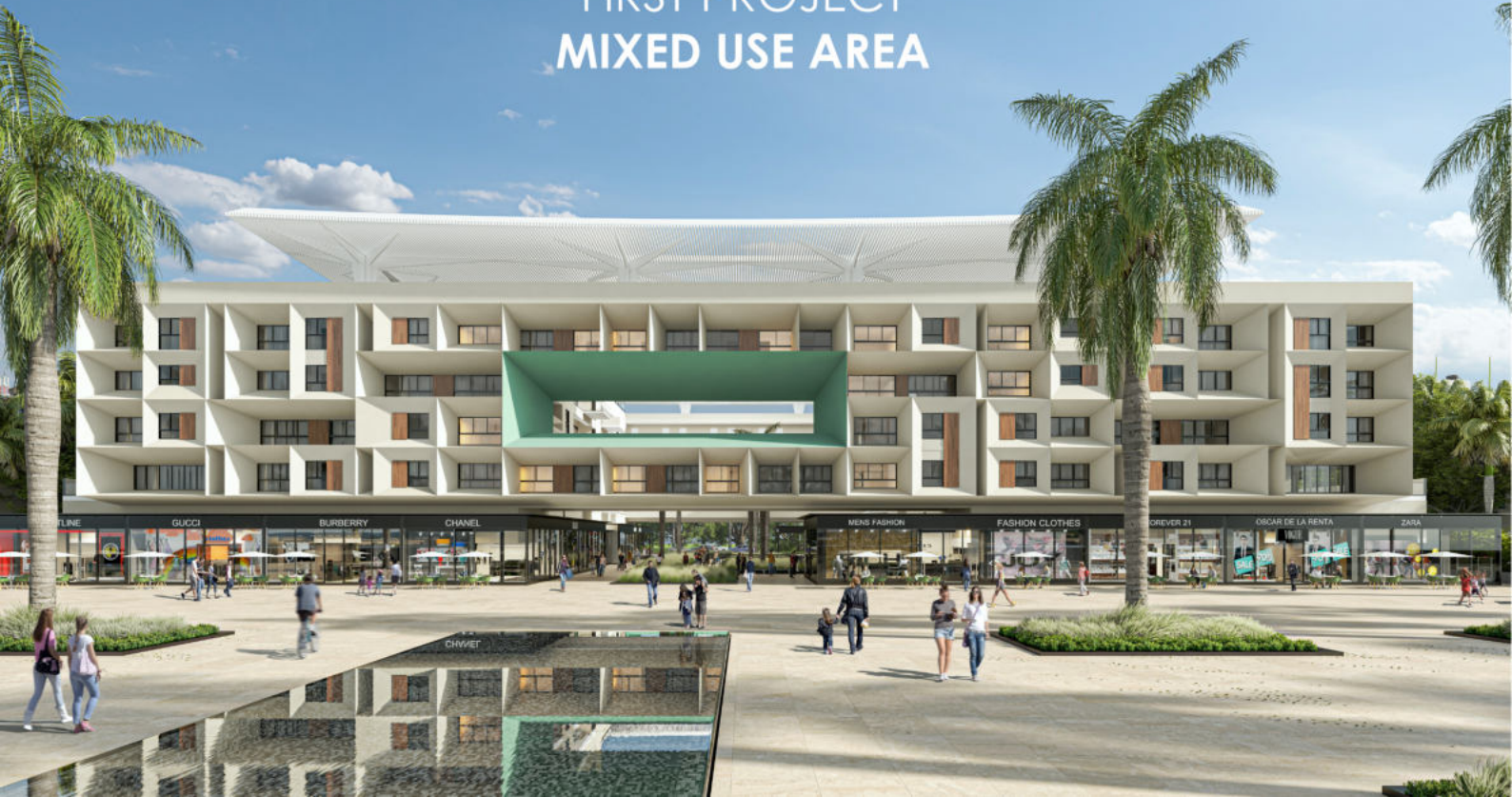
SUITES & RESIDENCES

noriega
Group

Downtown
PUERTO RICO

 **LUXIA LABS**
INNOVATION IN REAL ESTATE

FIRST PROJECT MIXED USE AREA





📍 Shopping Center

LOCATED IN THE CENTRAL AXIS OF THE
TOURIST POLE DOWNTOWN PUNTA CANA





EXPERIENCE THE BEST
COMMERCIAL AND ENTERTAINMENT PROPOSAL

↑ Luxury Shops





↑ Night life





STORE

COFFE SHOP

COFFE SHOP



FULLY FURNISHED
SMART APARTMENTS

↑ 1 and 2 bedroom apartments





📍 Rooftop lounge and picnic area



ATTRACTIVE AMBIANCE
MODERNITY
LIFESTYLE
ART **PLEASURE**





THE COMPLETE
EXPERIENCE



Amenities



shopping center



indoor park



Pool



restaurants



Wellness Area
(Spa, Yoga and Massages)



Rooftop Lounge



Rooftop Picnic Area



outdoor cinema



Art Pavillion



Co-working



Gym



Crossfit Box



children's play area



Running Track



Paddle



Library

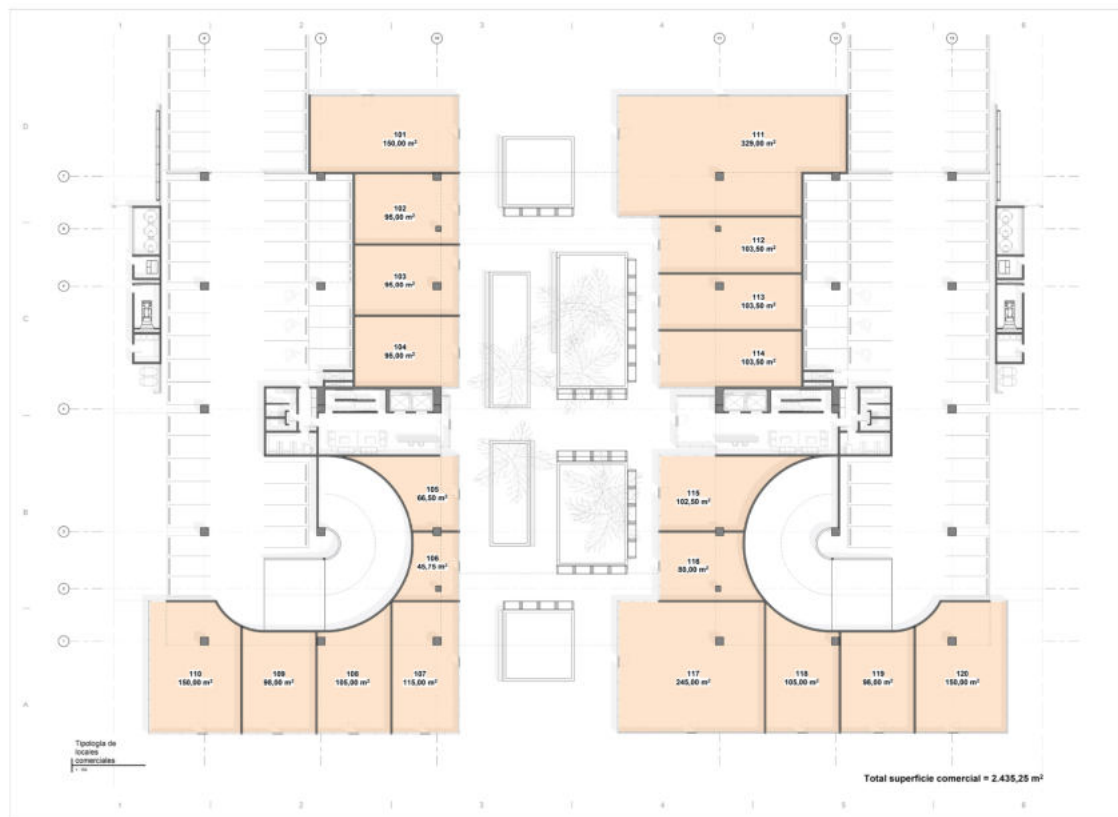


Coffe Shops



Zen Area

typology of commercial premises



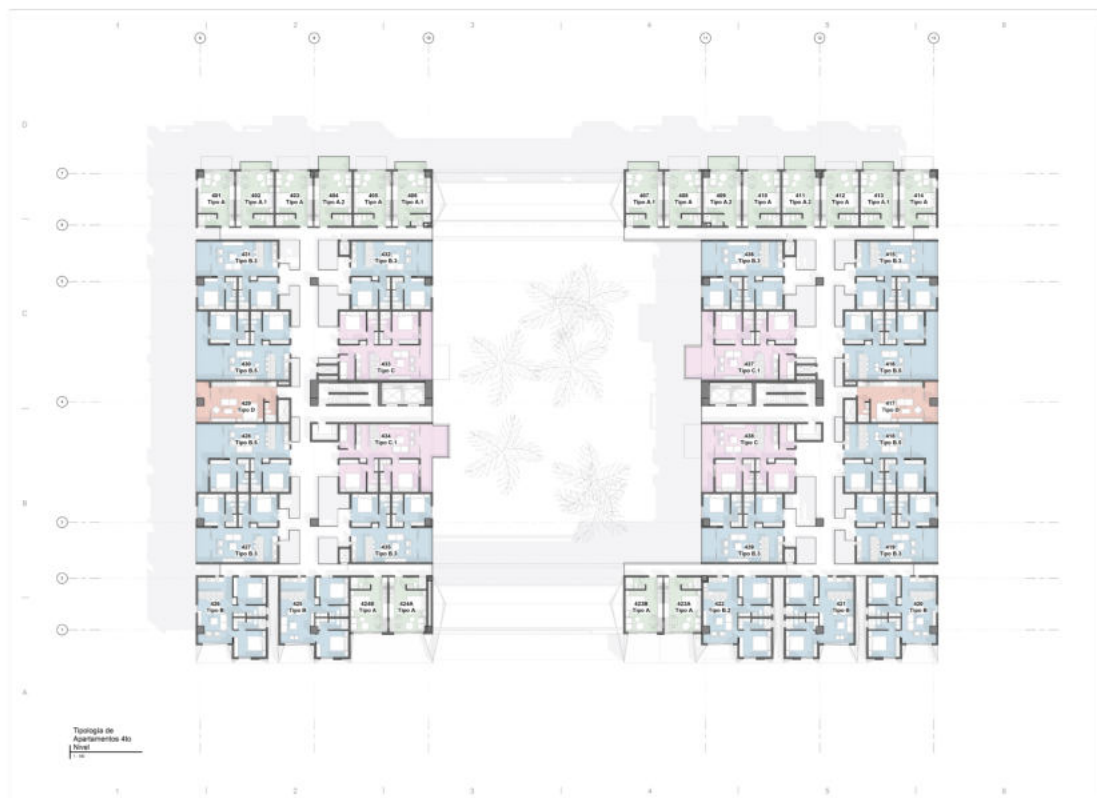
typology of 2nd Level Apartments



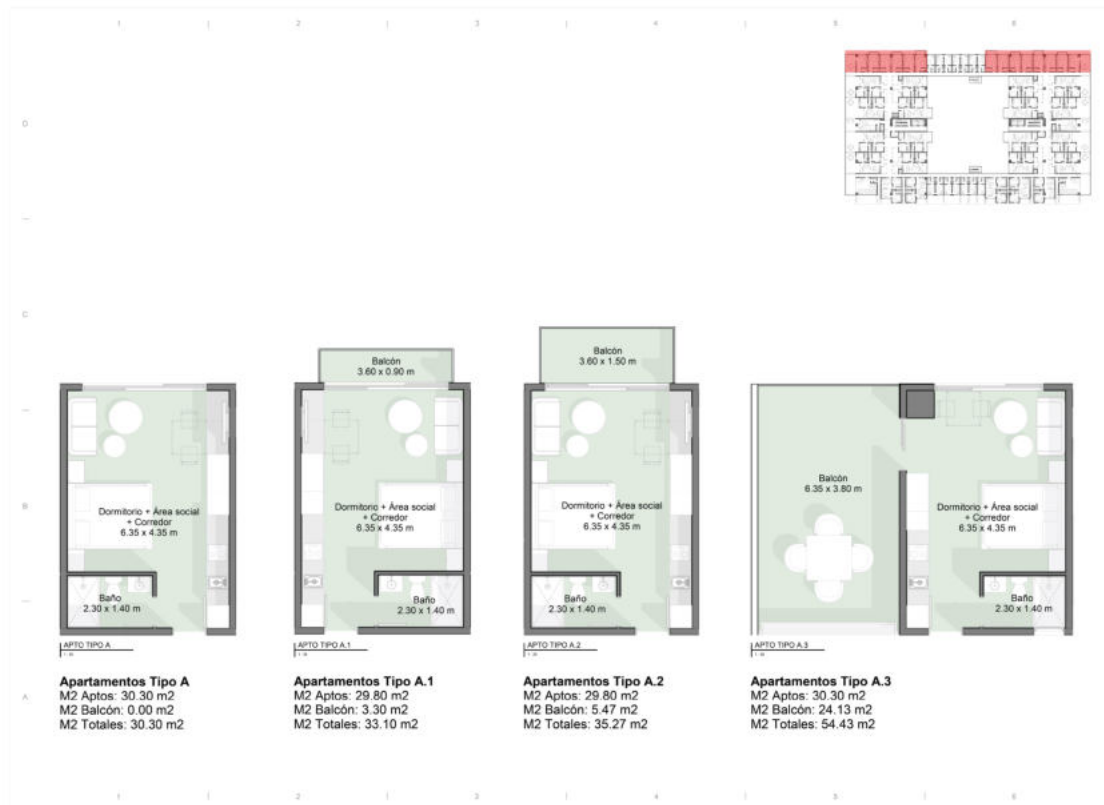
typology of 3rd Level Apartments



typology of 4th Level Apartments



typology of Type A Apartments



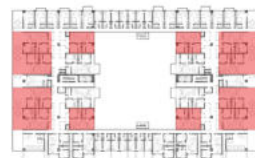
Type A Apartments



typology of Type B Apartments



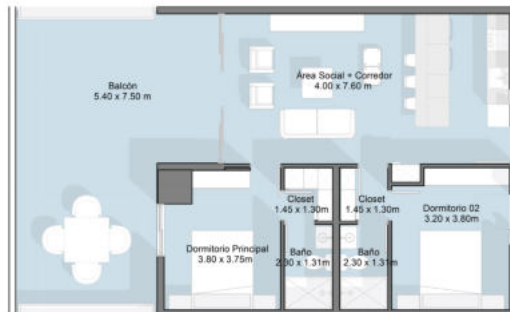
typology of Type B Apartments



APTO TIPO B.3

Apartamentos Tipo B.3

M2 Aptos: 70.40 m²
M2 Balcón: 7.22 m²
M2 Totales: 77.62 m²

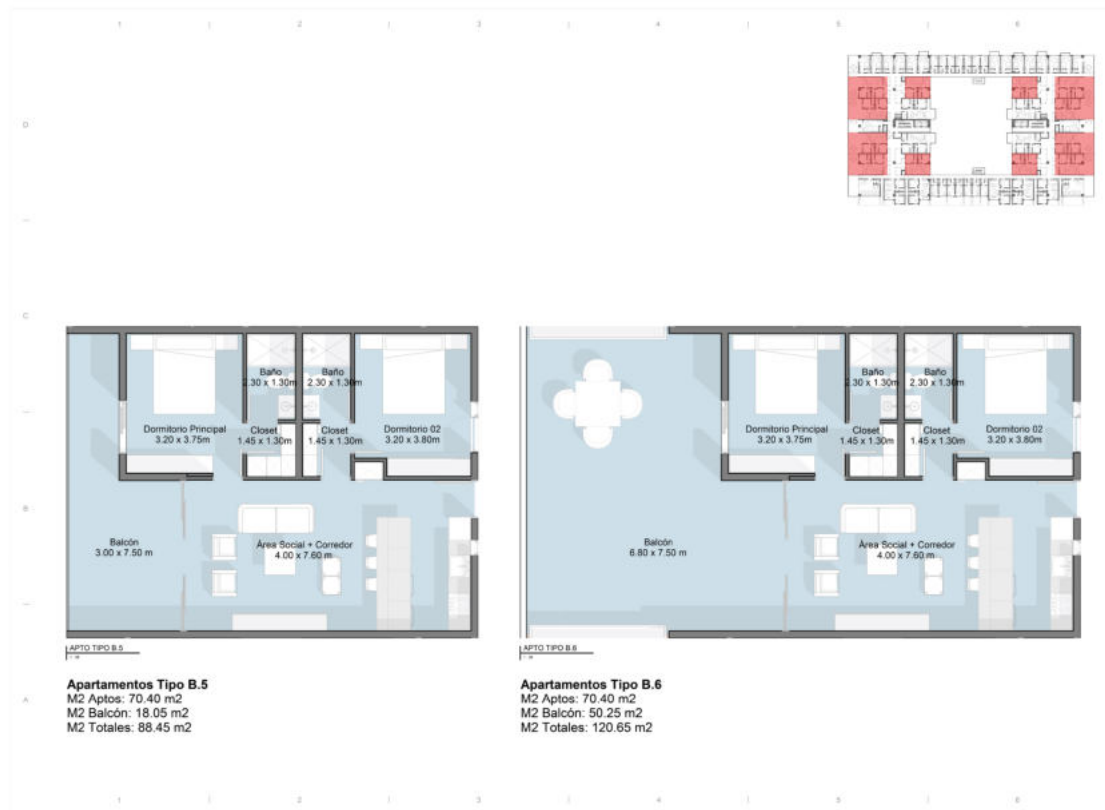


APTO TIPO B.4

Apartamentos Tipo B.4

M2 Aptos: 70.40 m²
M2 Balcón: 39.50 m²
M2 Totales: 109.90 m²

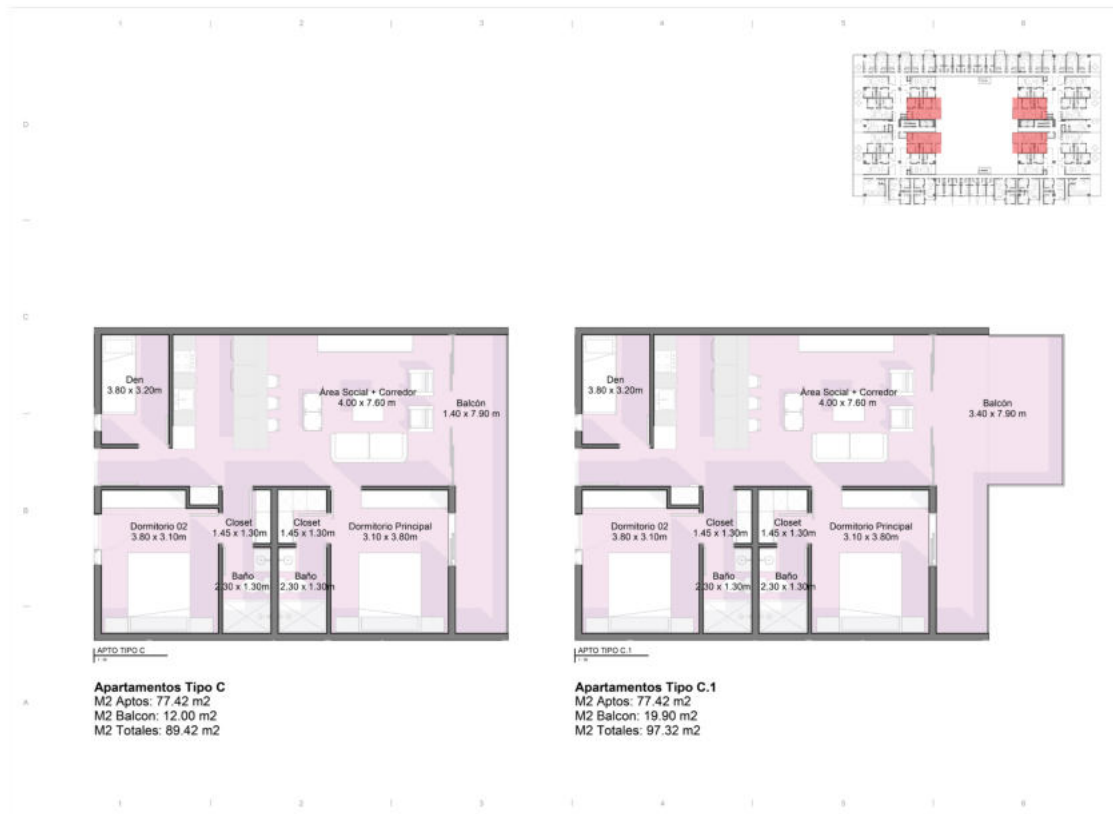
typology of Type B Apartments



Type B Apartments



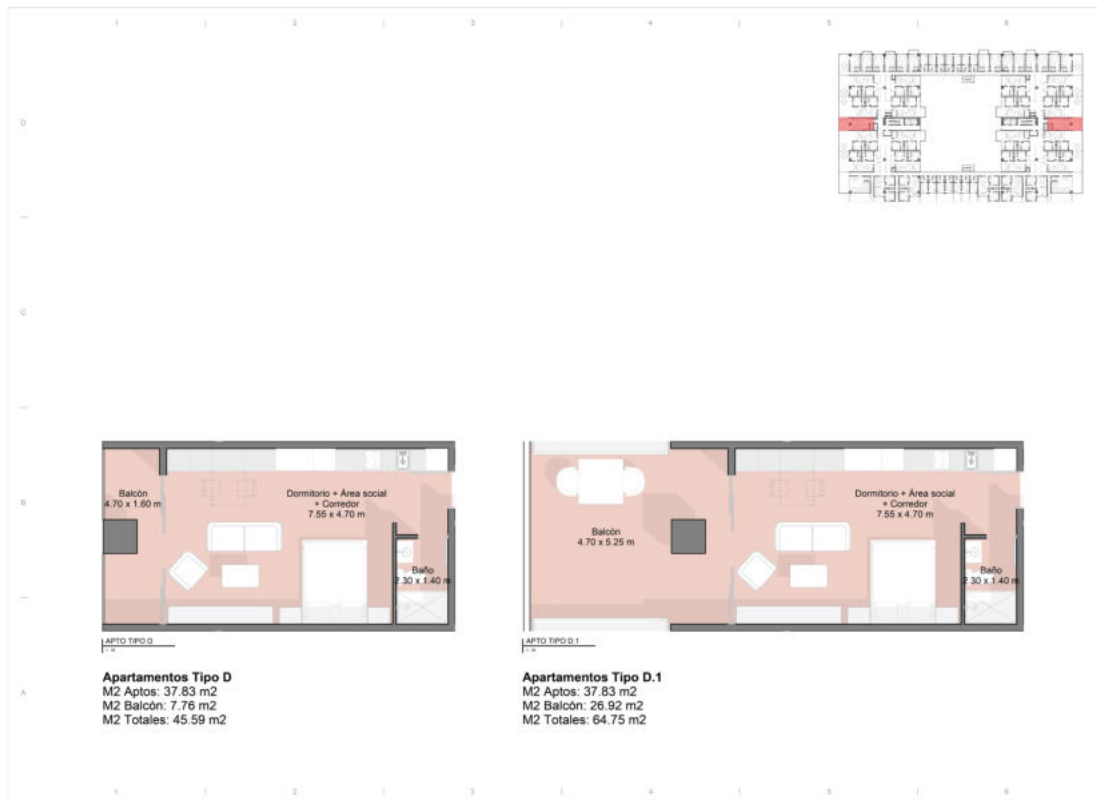
typology of Type C Apartments



Type C Apartments



typology of Type D Apartments



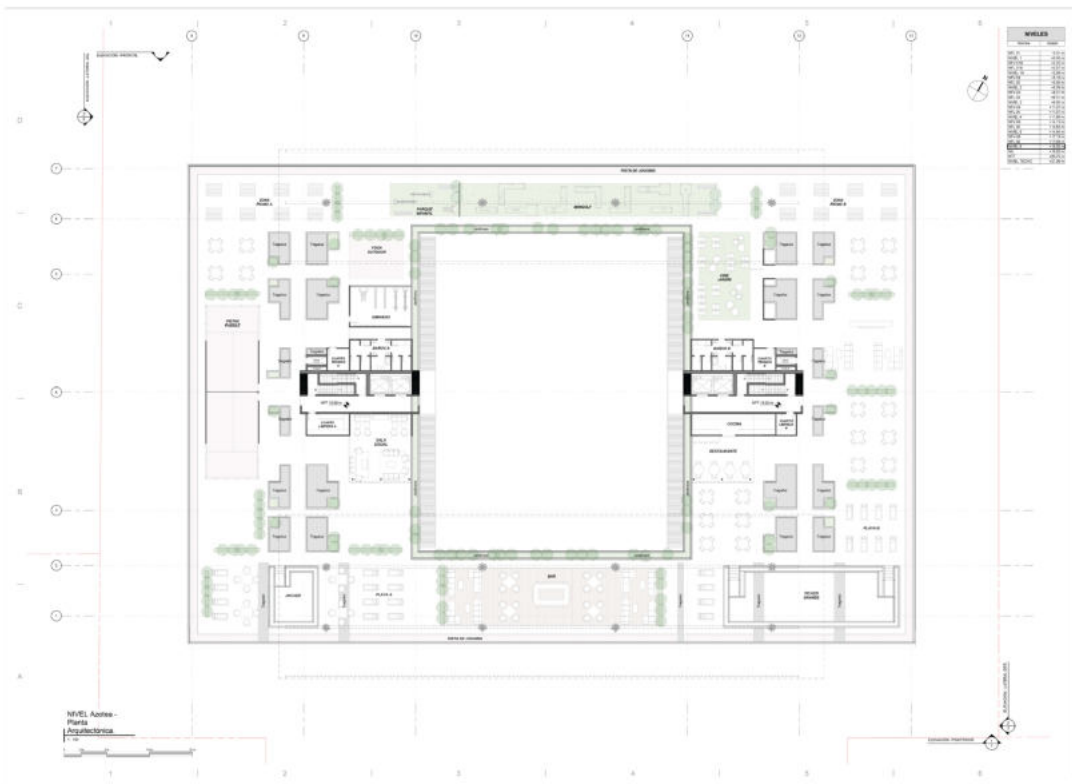
typology of Type E Apartments



Type E Apartments



Rooftop



Amenities

- Big Picuzzi
- Jacuzzi
- Bar
- Yoga – Outdoor multipurpose
- Palette
- Training ground
- Mini golf
- Picnic
- playground
- garden
- outdoor cinema

Location Map



noriega[®]
Group

Downtown
PUNTA CANA[®]

 **LUXIA LABS**
Desarrollo y Arquitectura